

Shinjuku Gyoen station has two exits. It depends on which direction you take from. If you from the line on Yotsuya, after step up stair of the exist, you will see scene below.

This case, you please go into a straight road which routing between "AMPM store" and "Wendy's".

From Shinjuku Gyoen station (Tokyo Metro Marunouchi line)



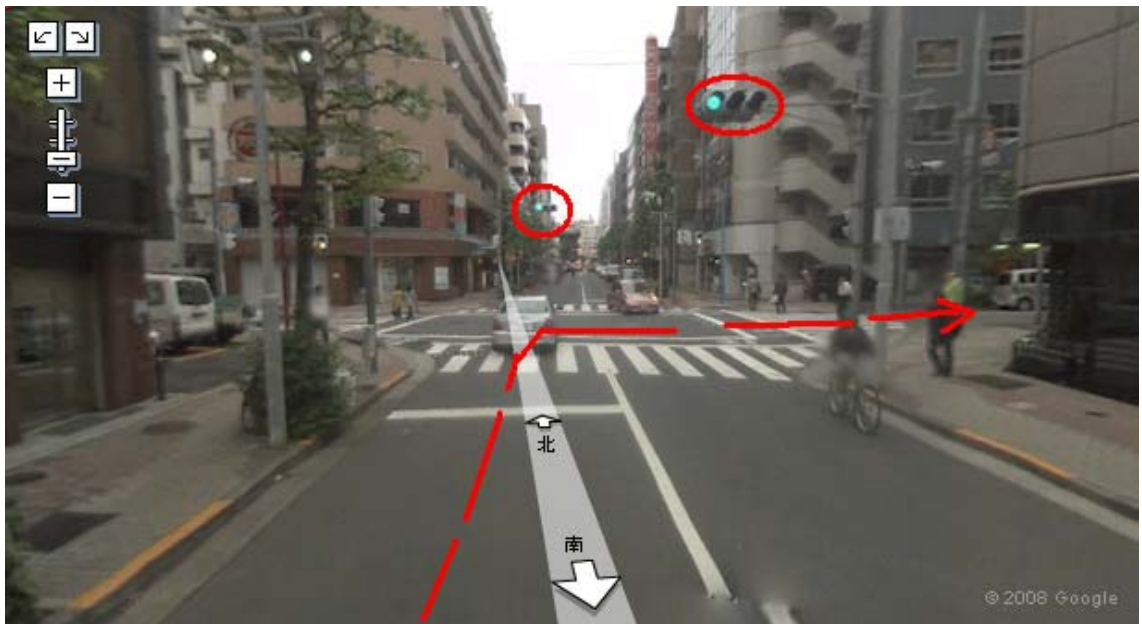
If you from the line on Shinjuku, after step up stair of the other exist, you will see scene below. If you turn right and go straight, you will reach to above showed the other exit, which locates at corner of Wendy's and AMPM store.



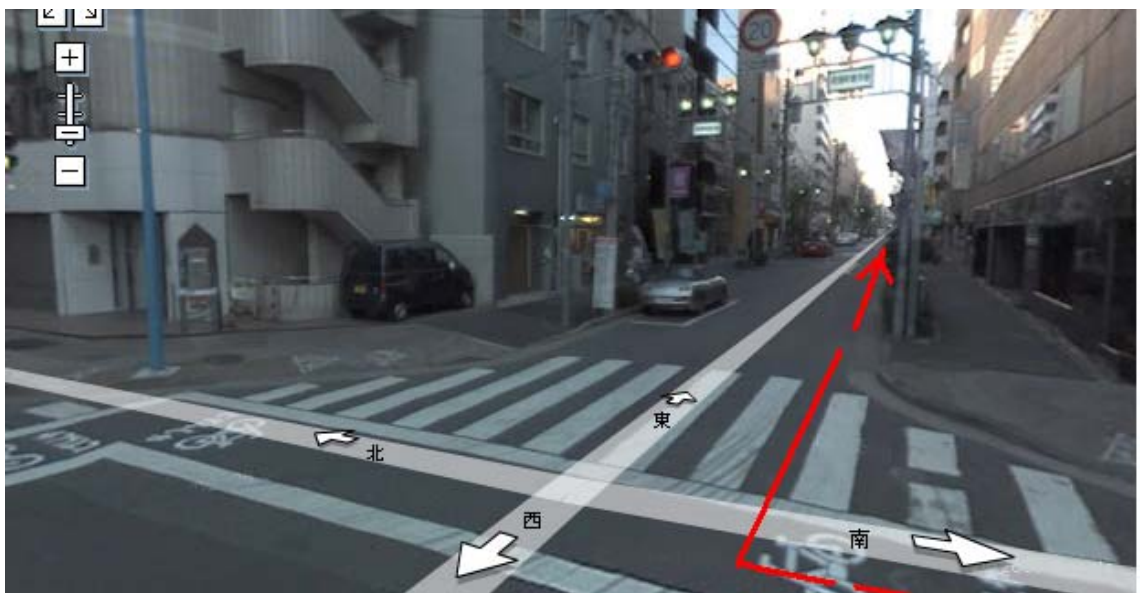
Then you please just go straight.



And you will face a signal at cross road as below. Then turn to right.



And you may see the scene as below. Please go straight.



Right side on the road, you will find a Japanese type pub in a building. Just next of the pub, you will see the entrance of a building which NPF belongs in. In the building, there is an elevator. Niwano Peace Foundation is no 5<sup>th</sup> Floor.

